

PRODUCT PORTFOLIO 2022

MOULD REMEDY
LIVING COMFORT
INTERIOR INSULATION
MOISTURE REMEDY
WALL COATINGS

Valid from: 01/01/2022



A company of the
Calsitherm® Group

1

Mould
remedy

REDSTONE VIVO LINE

Sustainable and preventive system products to combat mould –
for pure and clean surfaces

Page 3

2

Living
comfort

REDSTONE CLIMA LINE

Capillary-active products for a pleasant and mold-free room climate –
for a real feel-good atmosphere

Page 7

3

Interior
insulation

REDSTONE PURA LINE

Mineral insulation materials against cold rooms and high heating costs –
for effective interior insulation

Page 13

4

Moisture
remedy

REDSTONE SECCO LINE

System products for simple and safe moisture remediation –
for a dry building fabric

Page 19

5

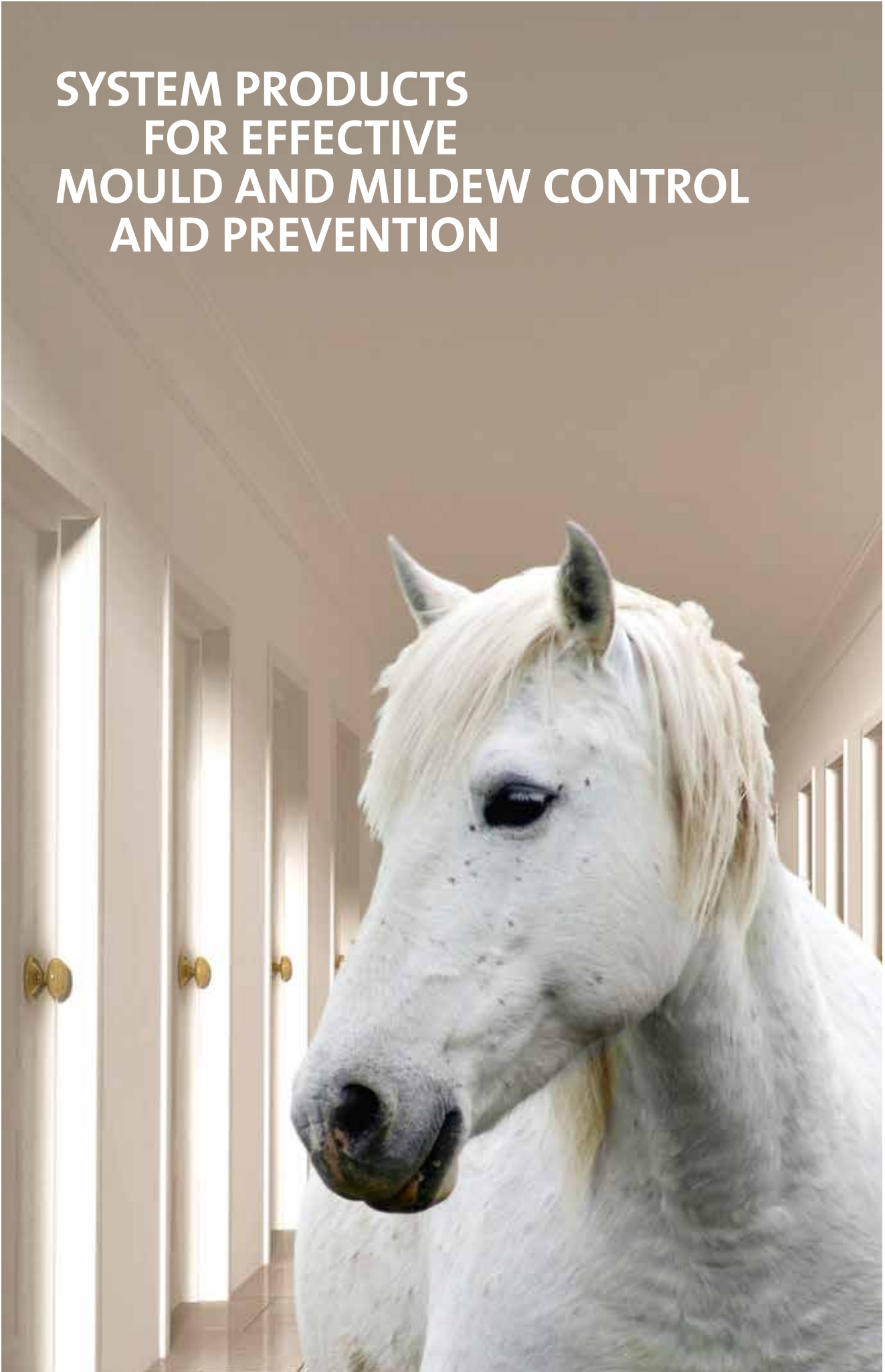
Wall coatings

REDSTONE LUNO LINE

Natural wall coatings made of lime and clay –
for beautiful and healthy living

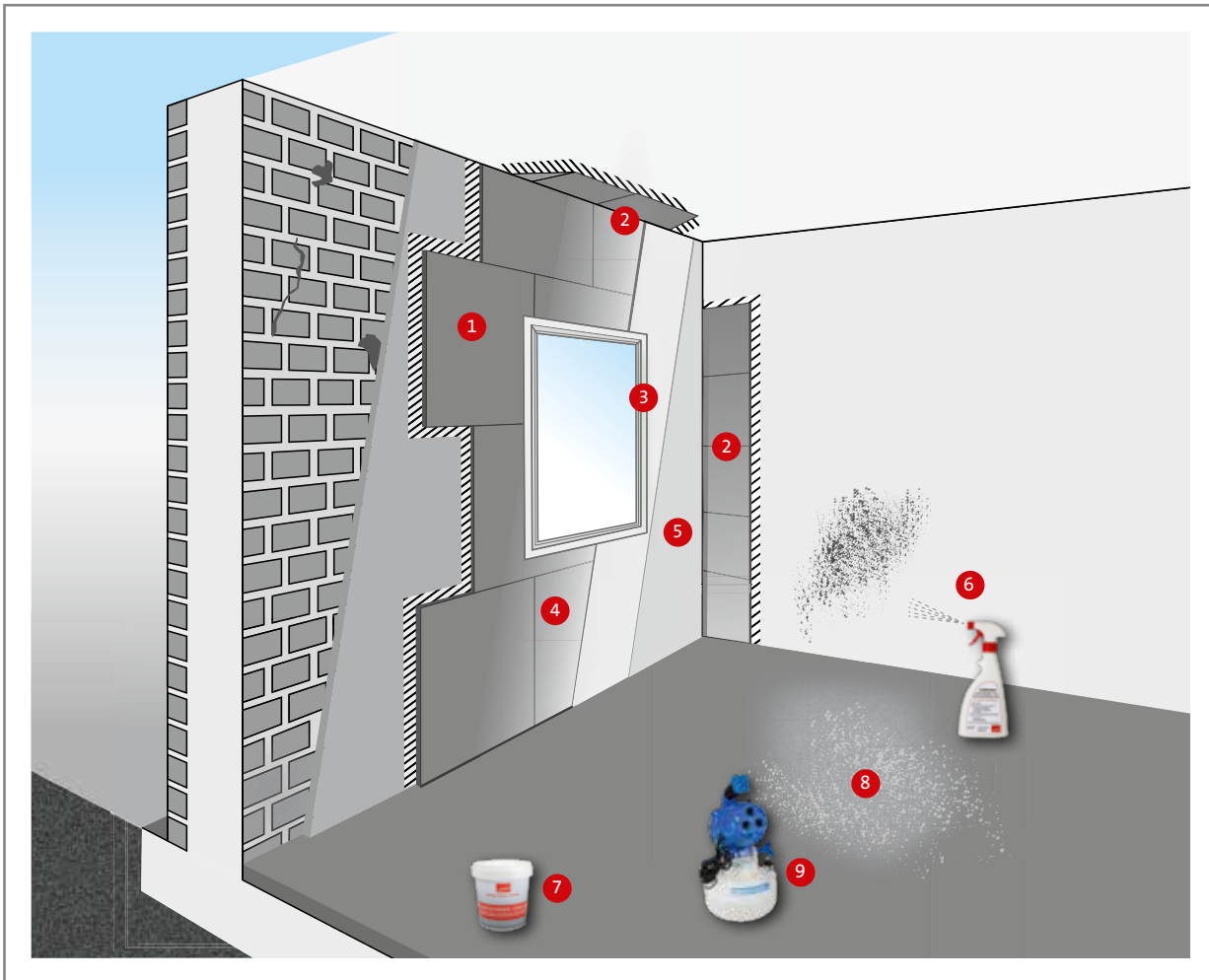
Page 25

SYSTEM PRODUCTS FOR EFFECTIVE MOULD AND MILDEW CONTROL AND PREVENTION



OVERVIEW

VIVO MOULD REMEDY



1 Clima Redboard pro /
Clima Redboard basic

2 Clima Redboard
wedge-shaped board

3 Clima Redboard
window soffit board

4 Primer

5 Vivo Vario Mineral/Vivo Clean

6 Vivo Mould and spore destroyer
SuS

7 Vivo Anti-mould coating film

8 Vivo Anti-spore mist AsN

9 Hurricane Cold fogger machine
(Ultra II)

Vivo Mould and spore destroyer SuS

Highly effective remedy for mould mycelium and spores with an innovative combination of active ingredients for professional use



Areas of application:

- on all common surfaces and in all areas such as living areas, industrial spaces and commercial premises
- can be used to control mould and mildew

Properties:

- kills mycelium and spores
- no gaps in effectiveness for scope of application
- not subject to labelling
- no hazardous materials
- alcohol-free, chlorine-free, hypochlorite- and aldehyde-free
- antibacterial action
- easy to use

Use:

approx. 100-150 ml/m² (depending on subsurface and severity of infection)

Container:

120 ml bottle (Item No. SuS120)
0.5 l bottle (Item No. SuS05)
2.5 l canister (Item No. SuS25)
10 l canister (Item No. SuS10)

EAN No.:

120 ml bottle: 4260122561285
0.5 l bottle: 4260122561230
2.5 l canister: 4260122561247
10 l canister: 4260122561254

Vivo Anti-mould coating film

Latex coating film for cleaning surfaces



Areas of application:

- natural latex emulsion for binding and removing loose mould components and spores on wall and ceiling surfaces

Properties:

- prevents loose spores from being dislodged
- easy application with brush or roller
- fast-drying
- adheres to smooth and rough surfaces
- can be easily removed after drying without leaving any residue

Use:

- approx. 150-200 ml for 1m² on smooth surfaces
- approx. 250-300 ml for 1m² on rough surfaces

Container:

600 ml bucket (Item No. ASFo6)

EAN No.:

4260122563609

Vivo Vario mineral

Anti-condensation coating for regulating room humidity and for mould prevention



Areas of application:

- prevents mould growth
- absorbs excess interior air humidity
- prevents the formation of condensation
- to create a healthy and comfortable indoor climate

Properties:

- solvent-free, plasticizer-free
- good coverage
- high breathability
- prevents the formation of condensation (physical mode of action via micro-porous structure)
- can be applied with a brush, roller, spatula and spray action
- unsaponifiable
- can be structured, e.g., in raw fibre optics
- dilutable with water (up to 20%)

Use:

approx. 0.8-1.2 kg/m²

Container:

5 kg bucket (Item No. WOS5AK)
20 kg bucket (Item No. WOS20AK)

EAN No.:

5 kg bucket: 4260122562237
20 kg bucket: 4260122562244

Vivo Clean

Home hygiene colour with antiviral and antibacterial efficacy, for mold prevention
Suitable for Allergy Sufferers

NEW in the product range!



Areas of application:

- indoor ceilings and walls, suitable for every living space
- on filled redstone calcium silicate and mineral insulation boards
- on woodchip, glass fiber, fleece and embossed wallpaper, plaster, concrete, plasterboard
- also for sensitive areas such as e.g. kindergartens, medical practices, offices, shop premises

Properties:

- antiviral and antibacterial efficacy (bacteria and germs find an unfavourable environment)
- prevents the growth of mould
- ready for use, drip inhibited
- free of preservatives, solvent additives or plasticizer
- free of algicidal and fungicidal additives
- free from fogging-active substances
- odorless
- high degree of whiteness, covers very well
- brush, roller and airless spraying

Use:

approx. 150 ml/m² (per coat) – depending on subsurface

Container:

12,5 l container (Art.-Nr. VV125CWF)

EAN No.:

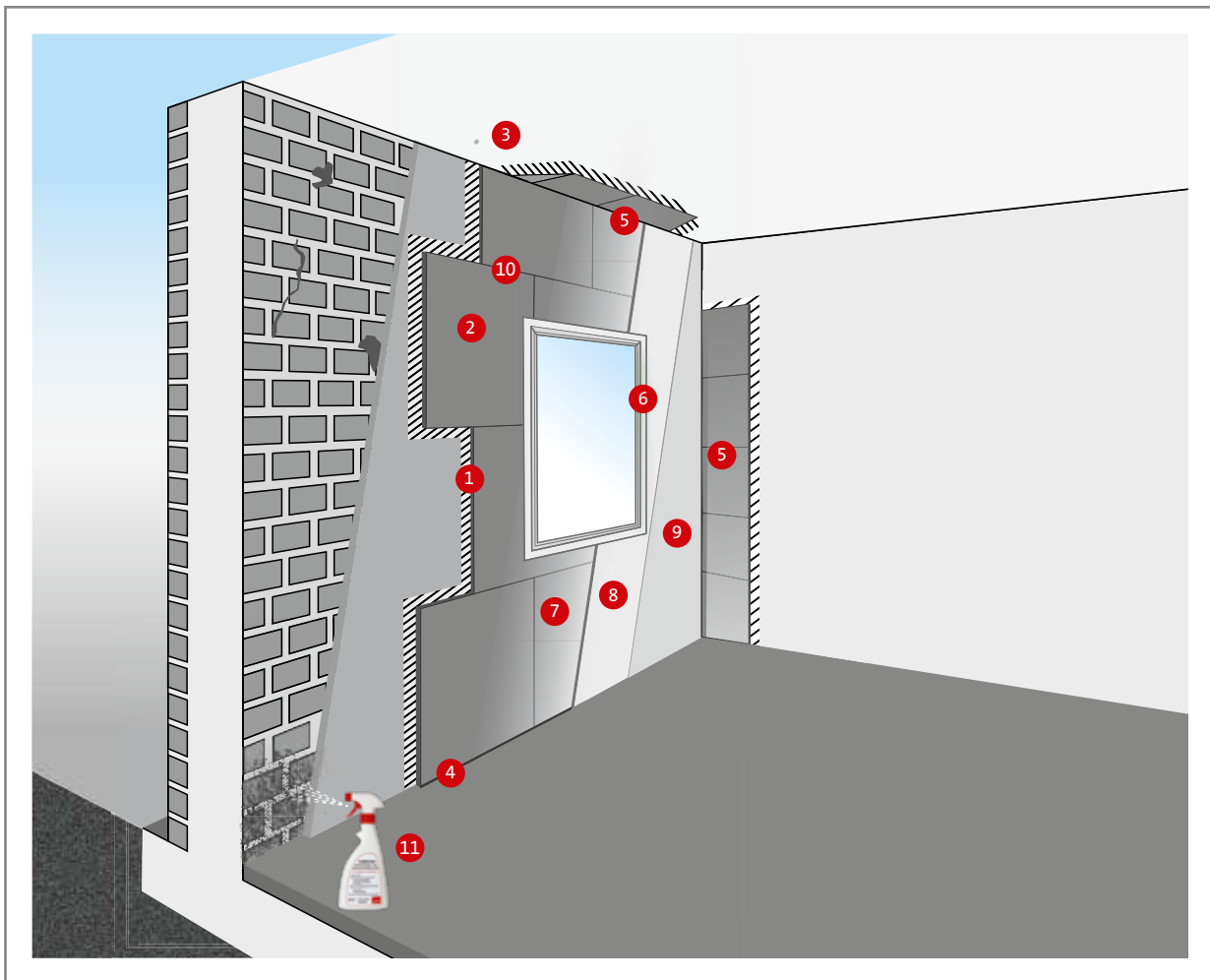
12,5 l container: 4260122564323



**FEEL THE DIFFERENCE
IN LIVING COMFORT
WITH REDSTONE CLIMA**

OVERVIEW

CLIMA LIVING COMFORT



- 1 System adhesive / Special adhesive SB
- 2 Clima Redboard pro / Clima Redboard basic
- 3 Clima Dowels (depending on application)
- 4 Pre-compressed sealant tape
- 5 Clima Redboard wedge-shaped board
- 6 Clima Redboard window soffit board
- 7 Primer / Luno Clay primer
- 8 Levelling compound / Luno Smooth finish lime plaster / Luno Clay plaster (smooth)
- 9 Luno Lime and silicate paints and plaster / Vivo Vario Mineral / Luno Clay paint
- 10 Clima Joint mesh/plaster mesh 070
- 11 Vivo Mould and spore destroyer SuS

Clima Redboard pro

Multifunctional board made of modified calcium silicate, pre-primed on the room side



Ideal for the interior insulation of walls and ceilings, for the renovation of old masonry and especially for increasing the comfort of indoor living environments.

The pre-primed, mineral board ensures that the indoor climate is always optimally adjusted due to its special structure and material basis. In addition, the panel is able to prevent mould.

Areas of application:

- to create a healthy and comfortable indoor climate
- to increase the well-being of people indoors
- for the interior insulation of walls and ceilings
- Absorbs excess interior air humidity
- prevents build up of condensation
- prevents mould growth

Properties:

- made of modified calcium silicate
- pre-primed on the room-side (= polished side of the board)
- highly stable
- high alkalinity prevents mould growth
- high breathability
- controls humidity
- capillary-active
- improves thermal insulation clearly
- thermal conductivity:
 - nominal value: 0,059 W/(m·K)
 - calculation value: 0,062 W/(m·K)
- prevents the formation of condensation
- lightweight board, easy handling
- non-flammable (A1)
- natural raw materials
- environmentally friendly
- 'Made in Germany' quality

Use:

1.05 m²/m²

Container:

1,250 x 1,000 x 25 mm
80 pcs./pallet (100 m²)
(Item No. RBP251250MM)

1,250 x 1,000 x 30 mm
68 pcs./pallet (85 m²)
(Item No. RBP301250MM)

1,250 x 1,000 x 50 mm
40 pcs./pallet (50 m²)
(Item No. RBP501250MM)

1,250 x 1,000 x 60 mm
33 pcs./pallet (41.25 m²)
(Item No. RBP601250MM)

625 x 1,000 x 25 mm
160 pcs./pallet (100 m²)
(Item No. RBP25625MM)

625 x 1,000 x 30 mm
136 pcs./pallet (85 m²)
(Item No. RBP30625MM)

625 x 1,000 x 50 mm
80 pcs./pallet (50 m²)
(Item No. RBP50625MM)

625 x 1,000 x 60 mm
66 pcs./pallet (41.25 m²)
(Item No. RBP60625MM)

If full packaging units are not accepted
repacking costs of 45.00 EURO

EAN No.:

1,250 x 1,000 x 25 mm: 4260122563883
1,250 x 1,000 x 30 mm: 4260122563890
1,250 x 1,000 x 50 mm: 4260122563906
1,250 x 1,000 x 60 mm: 4260122563913

625 x 1,000 x 25 mm: 4260122563838
625 x 1,000 x 30 mm: 4260122563845
625 x 1,000 x 50 mm: 4260122563852
625 x 1,000 x 60 mm: 4260122563869

Clima Redboard basic

Mineral moisture protection board made of cellulose-reinforced calcium silicate



Areas of application:

- prevents mould growth
- to improve thermal insulation
- absorbs excess interior air humidity
- prevents the formation of condensation
- improves indoor climate and environment

Properties:

- consists of cellulose-reinforced calcium silicate
- high alkalinity prevents mould growth
- high breathability
- improves thermal insulation
- thermal conductivity:
 - nominal value: 0,075 W/(m·K)
 - calculation value: 0,080 W/(m·K)
- prevents the formation of condensation
- low weight
- non-flammable (A1)

Use:

1.05 m²/m²

Container:

625 x 1,000 x 25 mm
160 pcs./pallet (100 m²)
(Item No. RBB25625MM)

625 x 1,000 x 40 mm
100 pcs./pallet (62.5 m²)
(Item No. RBB40625MM)

Further dimensions on request

If full packaging units are not accepted,
repacking costs of 45.00 EURO

EAN No.:

25 mm: 4260122563937
40 mm: 4260122563944

Clima Redboard wedge-shaped board

Mineral connecting wedge, pre-primed on the room side, made of calcium silicate



Areas of application:

- to finish the edges of Clima Redboard pro and basic, Pura Mineral Insulation Boards
- to compensate for thermal bridging (e.g. connections of ceilings to outer walls)

Properties:

- made of cellulose-reinforced calcium silicate
- high alkalinity prevents mould growth
- high breathability
- prevents the formation of condensation
- non-flammable (A1)

Use:

1.05 m/m

Container:

625 x 250 x (25-3) mm
10 pcs./package
(Item No. RBK251000MM)

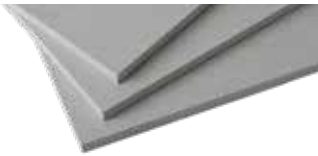
1,250 x 500 x (30-8) mm
(Item No. RBK301000MM)
2 pcs./package

EAN No.:

25-3 mm: 4260122563968
30-8 mm: 4260122563975

Clima Redboard window soffit board

Mineral boards made of cellulose-reinforced calcium silicate, pre-primed on the room-side



Areas of application:

- for use in areas around window and door reveals in interior spaces
- to compensate for thermal bridging

Properties:

- made of cellulose-reinforced calcium silicate
- high alkalinity
- high breathability
- prevents mould growth
- absorbs excess interior air humidity
- prevents the formation of condensation
- non-flammable (A1)

Use:

1.05 m²/m²

Container:

250 x 500 x 15 mm
20 pcs./package
(Item No. RBL15250MM)

Available only in complete package

EAN No.:

4260122563951

Primer

Silicate dispersion primer for absorbant substrates (e.g. Clima Redboard basic, Pura Mineral Insulation Board)



Areas of application:

- for mineral substrates such as masonry, solid plaster, concrete and similar

Properties:

- solvent-free
- plasticiser-free
- low odour
- high penetration depth
- good surface hardening
- highly breathable

Use:

approx. 200-400 ml/m²
determine exact material requirements by doing a trial coat on the object

Container:

1 l bottle (Item No. AC101TG)
5 l canister (Item No. AC100TG)
10 l canister (Item No. AC099TG)

EAN No.:

1 l bottle: 4260122563630
5 l canister: 4260122563265
10 l canister: 4260122563272

System adhesive

Moisture regulating thin-bed mortar for bonding interior insulation boards on mineral substrates



Areas of application:

- adhesive for mounting of Clima Redboard pro, Clima Redboard basic, Pura Mineral Insulation Boards and Secco Universal Renovation Board (USP)

Properties:

- hydraulic hardening
- capillary-active
- highly alkaline
- highly adhesive
- especially for surfaces containing mineral

Use:

ca. 5–6 m²/25 kg bag

Container:

25 kg bag (Item No. SK25KG)
42 bags/pallet

EAN No.:

4260122563982

Special adhesive SB

Sulfate-resistant thin-bed mortar for the bonding of interior insulation boards on gypsum containing substrate



Areas of application:

- adhesive for mounting of Clima Redboard pro, Clima Redboard basic, Pura Mineral Insulation Boards and Secco Universal Renovation Board (USP), especially on substrates containing gypsum

Properties:

- hydraulic hardening
- capillary-active
- highly alkaline
- sulphate resistant
- highly adhesive
- especially for surfaces containing gypsum

Use:

notched trowel method
approx. 4-5 kg/m²

Container:

25 kg bag (Item No. SKB20KG)
42 bags/pallet

EAN No.:

4260122563999

Levelling compound

Ready-to-use, white, breathable Levelling and Finishing Compound



Areas of application:

- On mineral substrates indoors, particularly for use on the following redstone products: Clima Redboard pro Clima Redboard basic, Pura Mineral Insulating Board, Secco Universal Renovation Board (USP)
- for filling in (smoothing) of vertical joint areas
- to affix corrosion-free corner protection rails
- to smooth, repair, coat

Properties:

- breathable
- high alkaline, hardened and tempered
- capillary-active
- good adhesive quality
- easy to work with

Use:

- approx. 0.5 kg/m² powder for joint filling
- approx. 1-2 kg powder at 1 mm layer thickness and full-surface application (depending on substrate roughness)

Container:

20 kg bag (Item No. AC098SMOC)
48 bags/pallet

EAN No.:

4260122566266

Luno Lime smooth finish

Breathable smoothing compound as a final Clima Redboard board coating and as a final indoor finishing coat



Areas of application:

- as a breathable final coating on interior mineral substrates
- Clima Redboard pro, Clima Redboard basic, Pura Mineraldämmplatte, Termoküp, Secco Universal Sanierplatte (USP), and other mineral construction material

Properties:

- breathable, capillary conductive
- highly alkaline
- smooth, easy to process
- mould-resistant
- fine surface, grindable

Use:

approx. 1.1 kg/m² per mm coating thickness

Container:

15 kg bag (Item No. LK15KG)
48 bags/pallet

EAN No.:

4260122569397

Plaster mesh 070

Fine glass scrim mesh for reinforcement



Areas of application:

- reinforcement layer on calcium silicate boards of the redstone line "living comfort (CLIMA)" in connection with redstone levelling compound and LUNO lime smooth finisher

Properties:

- non-slip, dimensions-stable
- alkali-resistant
- rot-resistant
- weight per unit area: approx. 70 ± 7 g/m²

Use:

1.1 m²/m² area

Container:

100 m² rolls
(width: 1 m, length: 100 m)
(Item No. ACC070PG)

EAN No.:

4260122563340

Pre-compressed sealant tape

Specially impregnated, pre-compressed sealing tape



Areas of application:

- to ensure airtight connections for movement joints
- for decoupling interior insulation from component connections
- Pre-compressed sealant tape, 15 mm width: mainly for connecting to reveals

Properties:

- soundproofing and thermal insulation
- open to vapour diffusion according to DIN 18542
- one-sided self-adhesive
- seals joints of:
 - 3-6 mm width -> 15 mm width (Item No.: KP1510B) and 5-10 mm width
 - > 25 mm width (Item No.: KP2508B)

Use:

1.02 m/m
Compress the tape in the case of end-jointed joints (1-2 cm additional/m)

Container:

15 mm: Roll of 10 m (Item No. KP1510B)
32 pcs./box

25 mm: Roll of 8 m (Item No. KP2508B)
19 pcs./box

EAN No.:

15 mm: 4260122564040
25 mm: 4260122564057

Clima Dowels

In the cross section constant impact dowel with reinforced PET nail for Clima Redboard

New container size!



Areas of application:

- for safety dowelling for Clima Redboard boards
- suitable for concrete, masonry, sand-lime brick, vertical perforated brick, aerated concrete
- overhead on ceilings and overhangs at least 4 pieces/m²
- for ceiling heights > 3,50m or with unstable subsoils min. 2 pieces/m²

Properties:

- Simple and time-saving assembly due to impact technique
- Polypropylene dowel with separate PET nail
- Thermal bridges reducing plastic stylus

Nominal length:

90 mm
(Item No. CLIMA90)

110 mm
(Item No. CLIMA110)

Container:

200 pcs./package

EAN No.:

90 mm: 4260122564064
110 mm: 4260122564071

Further lengths on request

Clima Joint mesh

Fine, alkali-resistant and system-tested glass fabric strip for embedding in levelling compounds, coatings and plasters



Areas of application:

- general use for reinforcement and bridging cracks, for use on alkaline to highly alkaline coatings and plasters in the joint area
- especially used as a crack-bridging insert in:
 - redstone levelling compound
 - redstone silicate brush-on plaster
 - other plasters

Properties:

- bridges cracks
- high breaking strength
- one-sided self-adhesive
- non-slip
- colour: white
- alkali-resistant
- plasticiser-free

Use:


approx. 1.05 m / running metre for joint

Container:

Rolls of 45 m (width 48 mm)
(Item No. Joint tissue)

EAN No.:

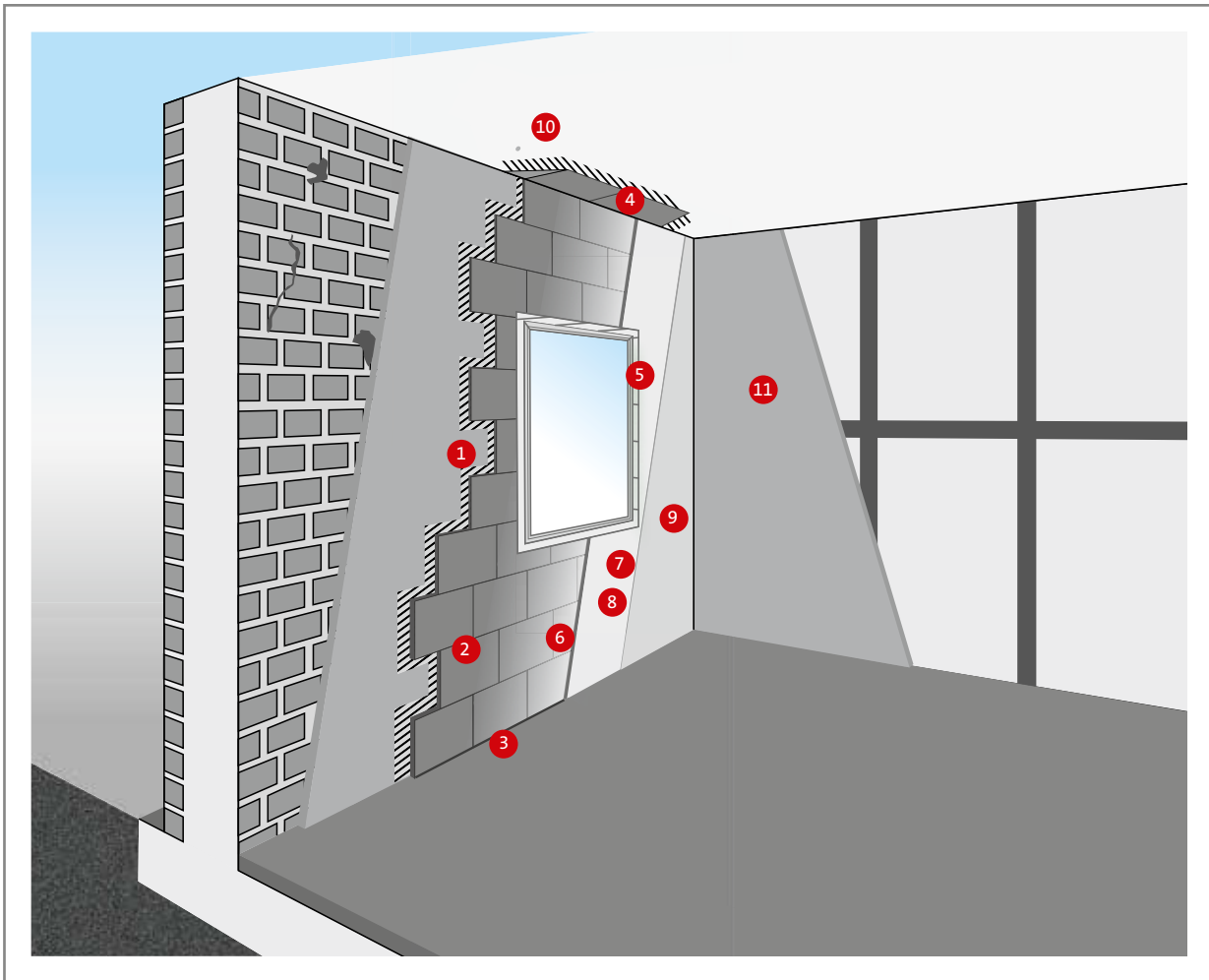
4260122564347

A man with a beard and a ponytail, wearing a brown sweater and blue jeans, is dancing with a young girl. The girl is wearing a blue shirt, leopard print leggings, and white sneakers. They are in a living room with a brown sofa, a white blanket, and a potted plant in the background. The man is holding the girl's hand, and she is holding another hand from an unseen person. The text "MINERAL INSULATION SYSTEMS FOR A HEALTHY INDOOR CLIMATE" is overlaid on the right side of the image.

MINERAL INSULATION SYSTEMS FOR A HEALTHY INDOOR CLIMATE

OVERVIEW

PURA INTERIOR INSULATION



- | | | |
|---|---|---|
| 1 System adhesive / Special adhesive SB /
Loam adhesive putty / Pura light | 5 Pura window soffit board /
Clima Redboard window
soffit board | 9 Luno Lime and silicate paints
and plaster/Vivo Vario Mineral/
Luno Clay paint |
| 2 Pura Mineral Insulation Board /
Pura dur/Termoküp | 6 Primer / Luno Clay primer | 10 Pura Dowels
(depending on the application) |
| 3 Pre-compressed sealant tape | 7 Levelling compound/
Luno Clay plaster (smooth) /
Pura light | 11 Pura Thermal insulation plaster |
| 4 Clima Redboard wedge-shaped
board | 8 Plaster mesh 165 | |

Pura Hydrophilic Mineral Insulation Board (capillary-active)

Non-flammable, fibre-free, hydrophilic mineral insulation board made of natural raw materials for the interior insulation of wall surfaces



Areas of application:

- thermal insulation of exterior walls in interior spaces
- insulation of building components with high hygric requirements such as gypsum-containing substrates or half-timbered walls

Properties:

- non-combustible A1 according to EN 13501
- easy to work on
- only ecological production
- thermal conductivity 0.042 W/(mK)
- technical and building biology system-tested by independent institutes
- low-emission, recommended for organic housing
- very capillary-active and quick-drying

Use:

approx. 4.4 boards/m²

Standard format containers:

60 x 38 x 5 cm
12 pcs./package (2.74 m²)
144 pcs./pallet (32.83 m²)
(Item No. PURA5)

60 x 38 x 6 cm
10 pcs./package (2.28 m²)
120 pcs./pallet (27.36 m²)
(Item No. PURA6)

60 x 38 x 8 cm
7 pcs./package (1.60 m²)
84 pcs./pallet (19.15 m²)
(Item No. PURA8)

60 x 38 x 10 cm
6 pcs./package (1.37 m²)
72 pcs./pallet (16.41 m²)
(Item No. PURA10)

EAN No.:

5 cm: 4260122565252
6 cm: 4260122565269
8 cm: 4260122565276
10 cm: 4260122565283

Delivery of full packages only. For deliveries of less than a pallet, a minimum quantity surcharge of 10% is applicable.

Pura Dur Hydrophilic Mineral Insulation Board (capillary-active)

Thin, non-combustible, fibre-free, hydrophilic mineral insulation board made of natural raw materials for the interior insulation of wall surfaces



Areas of application:

- thermal insulation of exterior walls in interior spaces
- insulation of building components with high hygric requirements

Properties:

- non-combustible A1 according to EN 13501
- high breaking strength
- easy to work on
- only ecological production
- thermal conductivity:
 - nominal value: 0.049 W/(m·K)
 - calculation value: 0.052 W/(mK)
- recommended for organic housing

Use:

approx. 4.4 boards/m²

Standard format containers:

60 x 38 x 2.5 cm
15 pcs./package (3.42 m²)
180 pcs./pallet (41.04 m²)
(Item No. PURA25)

60 x 38 x 3 cm
13 pcs./package (2.96 m²)
156 pcs./pallet (35.57 m²)
(Item No. PURA30)

60 x 38 x 4 cm
10 pcs./package (2.28 m²)
120 pcs./pallet (27.36 m²)
(Item No. PURA40)

EAN No.:

2.5 cm: 4260122565429
3 cm: 4260122565436
4 cm: 4260122565443

Delivery of full packages only. For deliveries of less than a pallet, a minimum quantity surcharge of 10% is applicable.

Pura window soffit board

Non-flammable, fibre-free, hydrophilic mineral insulation board made of natural raw materials for lining window and door reveals in interior spaces



Areas of application:

- as thermal insulation on window and door reveals in interior spaces

Properties:

- non-combustible A1 according to DIN 4102
- high breaking strength
- easy to work on
- only ecological production
- recommended for organic housing

Use:

14 boards/m²

Container:

Format of boards: 50 x 15 x 3 cm
26 pcs./package (1.95 m²)
(Item No. Purafenster)

EAN No.:

4260122565351

Delivery of full packages only.

Primer

Silicate dispersion primer for absorbing substrates (e.g. Clima Redboard basic, Pura Mineral Insulation Boards)



Areas of application:

- for highly absorbing substrates such as calcium silicat and mineral insulation boards
- for mineral substrates such as masonries, solid plasters, concrete and similiar

Properties:

- solvent-free
- plasticizer-free
- low odour
- high depth of penetration
- good surface compaction
- highly breathable

Use:

approx. 200-400 ml/m²
determine exact material requirements by doing a trial coat on the object

Container:

1 l bottle (Item No. AC101TG)
5 l canister (Item No. AC100TG)
10 l canister (Item No. AC099TG)

EAN No.:

1 l bottle: 4260122563630
5 l canister: 4260122563265
10 l canister: 4260122563272

Pura Dowels

Pre-assembled nail plug with improved plastic nail for Pura Mineral Insulation Board and Termoküp – each from 40mm thickness of boards

NEW in the product range!



Areas of application:

- for safety dowing of redstone Pura Mineral Insulation Board and Termoküp
- suitable for concrete, masonry, sand-lime brick, vertically perforated brick, porous concrete
- overhead on ceilings and excess lenghts, min. 4 pcs/m²
- for ceiling heights > 3,50 m or unstable subsoils use min. 2 pcs/m²

Properties:

- easy and time-saving installation due to impact technique
- optimized holding strength through glass fiber reinforced plastic (GRP)
- thermal bridge-free GRP nail with a Chi value of 0.00 W/K

Nominal length:

128 mm / PURA130
(Art.-Nr. PURA130)

148 mm / PURA150
(Art.-Nr. PURA150)

168 mm / PURA170
(Art.-Nr. PURA170)

Container:

50 pcs./package

EAN No.:

115 mm: 4260122565566
135 mm: 4260122565573
155 mm: 4260122565580

Further lenghts on request

Take information on the required usable length please refer to the technical data sheet below
www.redstone.de/downloads

Pura Thermal insulation plaster

Mineral, moisture-regulating interior insulation plaster



Areas of application:

- insulating plaster for walls, ceilings and mineral substrates
- pollutant-free, odourless, ideal for living and recreation rooms

Properties:

- regulates climate and humidity
- breathable, capillary-active
- non-combustible (A1)
- heat-insulating ($\lambda = 0.077 \text{ W/(mK)}$)
- prevents condensation and mould formation
- natural, purely mineral (based on perlite), without artificial additives

Use:

50 l is sufficient
at d = 20 mm for approx. 2 m² plaster
at d = 30 mm for approx. 1.33 m² plaster

Container:

50 litre bag (Item No. FS50SO)
30 bags per pallet

EAN No.:

4260122568109

Plaster mesh 165

Glass scrim mesh for reinforcement



Areas of application:

- reinforcement layer in redstone products such as Luno lime interior plaster, levelling compound

Properties:

- non-slip
- dimensional stable
- alkali-resistant
- rot-resistant
- weight per unit area: 160 ± 5 g/m²

Use:

1.1 m²/m² area

Container:

50 m² rolls
(width: 1 m, length: 50 m)
(Item No. ACC165PG)

EAN No.:

4260122563333

Levelling compound

white, breathable fill and finishing compound



Areas of application:

- On mineral substrates indoors, particularly for use on the following redstone products: Clima Redboard pro Clima Redboard basic Pura Mineral Insulating Board, Secco Universal Renovation Board (USP)
- for filling in (smoothing) of vertical joint areas
- to affix corrosion-free corner protection rails
- to smooth, repair, coat

Properties:

- breathable
- high alkaline, hardend and tempered
- capillary-active
- good adhesive quality
- easy to work with

Use:

- approx. 0.5 kg/m² powder for joint filling
- approx. 1-2 kg powder at 1 mm layer thickness and full-surface application (depending on substrate roughness)

Container:

20 kg bag (Item No. ACOg8SMOC)
48 bags/pallet

EAN No.:

4260122566266

System adhesive

Ready for use, moisture-regulating factory-made dry-mix mortar



Areas of application:

- adhesive for mounting of Clima Redboard pro, Clima Redboard basic, Pura Mineral Insulation Boards and Secco Universal Renovation Board (USP)

Properties:

- hydraulic hardening
- capillary-active
- highly alkaline
- highly adhesive
- especially for surfaces containing mineral

Use:

notched trowel method
approx. 4-5 kg/m²
(depending on the condition of the substrate)

Container:

25 kg bag (Item No. SK25KG)
42 bags/pallet

EAN No.:

4260122563982

Special adhesive SB

sulphate resistant thin-bed-mortar for the glueing of interior insulation boards on gypsum substrates



Areas of application:

- adhesive for mounting of Clima Redboard pro, Clima Redboard basic, Pura Mineral Insulation Boards and Secco Universal Renovation Board (USP), especially on substrates containing gypsum

Properties:

- hydraulic hardening
- capillary-active
- highly alkaline
- sulphate resistant
- highly adhesive
- especially for surfaces containing gypsum

Use:

notched trowel method
approx. 4-5 kg/m²

Container:

25 kg bag (Item No. SKB20KG)
42 bags/pallet

EAN No.:

4260122563999

Pre-compressed sealant tape

Specially impregnated, pre-compressed sealing tape



Areas of application:

- to ensure airtight connections for movement joints
- for decoupling interior insulation from component connections
- Pre-compressed sealant tape, 15 mm width: mainly for connecting to reveals

Properties:

- soundproofing and thermal insulation
- open to vapour diffusion according to DIN 18542
- one-sided self-adhesive
- seals joints of:
3-6 mm width -> pre-compressed sealant tape 15 mm width (Item No. KP1510B) and 5-10 mm width -> pre-compressed sealant tape 25 mm width (Item No. KP2508B)

Use:

1.02 m/m
Compress the tape in the case of end-jointed joints (1-2 cm additional/m)

Container:

15 mm: Roll of 10 m (Item No. KP1510B)
32 pcs./box

25 mm: Roll of 8 m (Item No. KP2508B)
19 pcs./box

EAN No.:

15 mm: 4260122564040
25 mm: 4260122564057

Pura light

mineral light bonding and reinforcement mortar for hydrophile interior insulation boards

NEW in the product range!

**Areas of application:**

- comb bonding
- to make fabric fillings
- to make felted and smoothed surfaces
- to smooth and repair small unevenness and damaged spots in the substrates

Properties:

- mineral
- easy to process (by hand and and by machine)
- fibre-reinforced
- low tension and shrinkage
- high yield
- high adhesive strength
- contains mineral light aggregates
- colour: white

Use:

approx. 0,9 kg/m² per mm layer thickness

Bonding:

approx. 3,5 kg–4,5 kg/m²

Reinforcement:

approx. 3,5 kg–4,5 kg/m²

Container:

20 kg bag (Item No. Pura20LG)

48 bags/pallet

EAN No.:

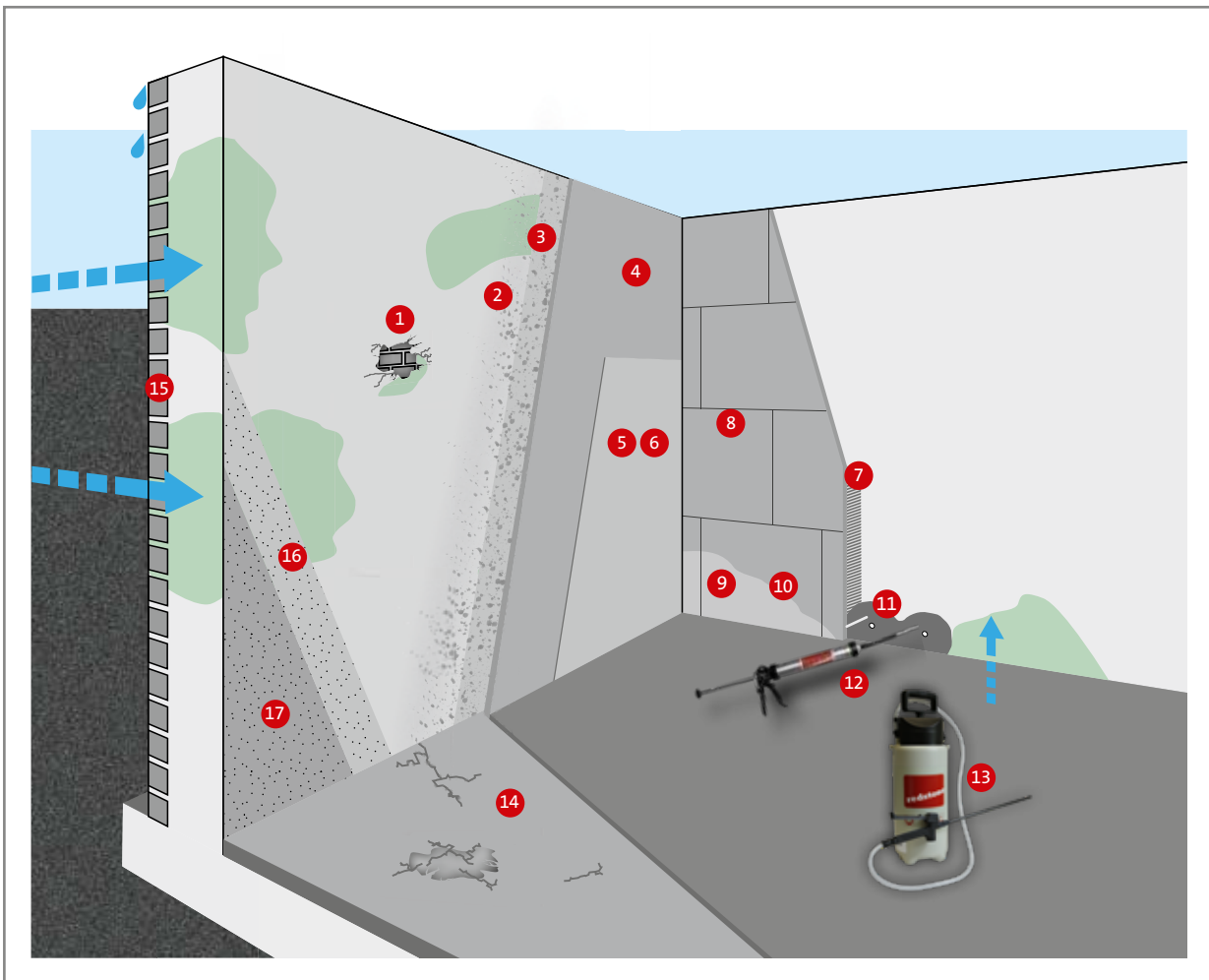
4260122565900

SYSTEM PRODUCTS FOR SIMPLE MOISTURE REMEDY OF INTERIOR



OVERVIEW

SECCO MOISTURE REMEDY



- | | | |
|---|---|--|
| 1 Secco Barrier plaster | 7 System adhesive / Special adhesive SB | 12 Secco Tubular film bag press |
| 2 Secco Quick rough plaster | 8 Secco Universal Renovation Board (USP) | 13 Secco Grout pump |
| 3 Secco Primer FS / Hybrid primer | 9 Primer | 14 Secco Quick high-performance mortar |
| 4 Secco Waterproof/ Secco Barrier plaster or Secco Activepor/Secco Base and dehumidifying plaster | 10 Levelling compound | 15 Secco One |
| 5 Luno Indoor plaster | 11 Secco Horizontal barrier / Secco Horizontal barrier sticks | 16 Secco Hybrid primer |
| 6 Vivo Vario mineral | | 17 Secco Due |

Secco Due

One-component, mineral hybrid mortar for waterproof grouting and smoothing in interior spaces



Areas of application:

- surface sealing or repair of concrete, masonry or cement plaster in damp rooms, cellars, containers, shafts, etc.
- for subsequent internal waterproofing against negative pressure water in cellars, underground car parks, etc.
- for the production of hollow grooves and re-profilings impermeable to pressurised water
- use as a mortar for defects and repair of chippings and grooves
- not suitable for sealing to prevent flowing water
- not suitable for aerated concrete

Properties:

- fast curing, versatile
- high-pressure and abrasion resistance
- good chemical resistance
- resistant to salts in masonry

Use:

approx. 1.8 kg/l cavity
approx. 1.8 kg/m² per mm layer thickness
approx. 2.5 kg/m hollow groove

Container:

12.5 kg bucket (Item No. FS125DUE)
36 buckets/pallet

EAN No.:

4260122568628

Secco Hybrid primer

Salt-binding deep primer to reduce absorbency and to consolidate mineral substrates



Areas of application:

- as a system product for use under product Secco Due
- to prevent the formation of scaling
- to cure sealing whitewashes
- for the protection of mineral substrates

Properties:

- low-viscosity combination product with a polymer/silicate base
- reduces the pore volume of salty and damp substrates
- reduces renewed salt efflorescence
- increases the chemical and mechanical durability of mineral building materials
- solidified and hydrophobicised
- penetration depth depending on the substrate: up to 2 cm
- compatible with mortars, plasters, concrete and cement-based whitewashes

Use:

approx. 0.15-0.3 kg/m²
(depending on the surface and intended use)

Container:

1 kg bottle (Item No. FS01HG)

EAN No.:

4260122568642

Secco One

Mineral, two-component waterproofing



Areas of application:

- bitumen-free and solvent-free sealing for horizontal and vertical areas

Properties:

- environmentally sustainable, as it does not contain solvents and bitumen
- resistant to ageing and UV
- resistant to compression and pressurised water
- rainproof after approx. 2 hours, resilient after approx. 16 hours
- can be plastered over
- can be worked over with siloxane and acrylic paints
- impervious to radon

Use:

approx. 3.2-4.5 kg/m² depending on application

Container:

12.5 kg combi-container
(liquid component 5 kg and powder component 7.5 kg)
(Item No. FS15MA)

25 kg combi-container
(liquid component 10 kg and powder component 15 kg)
(Item No. FS25MA)

EAN No.:

12.5 kg combi-container 4260122568543
25 kg combi-container 4260122568451

Secco Horizontal barrier

Paste-like horizontal barrier,
water repellent cream



Areas of application:

- subsequent chemical horizontal barriers to protect against capillary rising damp
- for all mineral building materials – except aerated concrete

Properties:

- proof of suitability for chemical horizontal barriers (against rising damp)
- ready-to-use horizontal barrier, emulsion with very good penetration depth into mineral building materials
- reduces water absorption (water-repellent effect)
- fault-tolerant and quick application without complex injection technology
- consistency: paste-like, stable

Note: Use Secco Sperrputz, Secco Due or Secco Waterproof to close the drill holes!

Use:

depending on wall thickness (d),
Example:
d = 17.5 cm
approx. 110 ml / running metre
d = 40.0 cm
approx. 310 ml / running metre

Container:

600 ml tubular film bag
(12 tubular bags/box)
(Item No. FS600HS)

5 l bucket
(45 buckets/pallet)
(Item No. FS05HS)

20 l bucket
(18 buckets/pallet)
(Item No. FS20HS)

EAN No.:

600 ml: 4260122568130
5 l: 4260122568703
20 l: 4260122568710

Secco Horizontal barrier sticks

with water-resistant substance
impregnated fibre sticks



Areas of application:

- pressure-free production of subsequent chemical horizontal barriers to protect against capillary rising damp in mineral building materials – except aerated concrete

Properties:

- solvent-free
- breathable
- no additional assembly tool required
- very easy and fast application
- simple and safe calculation of consumption
- is to be accurately calculated

Note: Use Secco Sperrputz, Secco Due or Secco Waterproof to close the drill holes!

Use:

depending on wall thickness (d),
Example:
d = 17.5 cm
approx. 4 pcs. / running metre
d = 40.0 cm
approx. 14 pcs. / running metre

Container:

180 mm rods
Diameter: 12 mm
(10 sticks/package)
(Item No. FS180HS)

EAN No.:

4260122568611

Note: Do not open the packaging until all preparatory work has been carried out to avoid uncontrolled volatilization of active substance!

Secco Barrier plaster

Fast curing Plugging-Swelling
mortar



Areas of application:

- for quick sealing of leakage in the event of water ingress into concrete and masonry surfaces
- for sealing of pipe and cable bushings

Properties:

- mineral, extremely fast curing
- swells slightly during the curing process
- very good adhesion to mineral substrates
- hardens even under water

Use:

approx. 2 kg/dm³

Container:

15 kg plastic bucket
(Item No. FS15SM)

EAN No.:

4260122568413

Secco Quick rough plaster

Fast curing, tempered pre-sprayed mortar with quick recoatability



Areas of application:

- factory-made dry-mix mortar for mineral substrates with the exception of aerated concrete blocks and gypsum
- ideal as a fast bonding course under Secco Barrier plaster for "moisture remedy in just one day"

Properties:

- for interior and exterior walls
- can be processed by hand or with a machine
- subsequent plaster application is possible after just 30-60 minutes
- as bonding course in the quick Secco System

Use:

4-5 kg/m² pre-sprayed mortar for full-surface application

Container:

25 kg bag (Item No. FS25SBS)
42 bags/pallet

EAN No.:

4260122568444

Secco Base and dehumidifying plaster

Breathable plaster with special micro-porous structure for dehumidifying damp building components (permanent alternative to renovation and sacrificial cleaning)



Areas of application:

- for dehumidification and drying of wet and salt-loaded walls (e.g. for basement walls)
- for dehumidification of components after damage (e.g. leakages)
- for the prevention of salt and moisture damage to moist components
- not suitable for aerated concrete

Properties:

- prevents salt storage and crystallisation
- actively supports the drying out of damp walls
- avoidance of hygroscopic moisture and salt damage
- can be painted over after the component has dried

Use:

approx. 30 kg/m²
(approx. 25 kg is sufficient for approx. 0.8 m² at 2 cm thickness)

Container:

25 kg bag (Item No. FS25EP)
36 bags/pallet

EAN No.:

4260122568185

Secco Barrier plaster

Special mortar resistant to pressurised water for internal sealing



Areas of application:

- sealing of damp and wet salt-loaded wall surfaces
- repair of failed areas in the wall area
- not suitable for aerated concrete

Properties:

- for interior and exterior walls
- highly alkaline
- suitable for damp and salt-loaded plaster base
- tested up to a water column of 5 m (negative pressure)

Use:

30 kg/m²
(25 kg is sufficient for 0.8 m² at 1.5 cm thickness)

Container:

25 kg bag (Item No. FS25SP)
36 bags/pallet

EAN No.:

4260122568154

Secco Primer FS

Primer for Secco Barrier plaster and Secco Base and dehumidifying plaster



Areas of application:

- for the pretreatment of mineral substrates
- salt barrier under Secco Barrier plaster and Secco Base and dehumidifying plaster

Properties:

- water vapour permeability
- solvent-free
- highly alkaline

Use:

approx. 500-750 ml/m²

Container:

5 l canister (Item No. FS05GFS)
10 l canister (Item No. FS10GFS)

EAN No.:

5 l canister: 4260122568208
10 l canister: 4260122568161

Secco Waterproof

Sealing and waterproof plaster, rich functional coat for the sealing against negative water pressure, for exterior and interior applications



Areas of application:

- pressure resistant sealing against damp and salt containing walls
- to be used interior and exterior with a plaster thickness starting from 1cm
- single-layer insulation for internal sealing
- reprofiling of concrete and grout cone (e.g. at stairs, balconies)
- sustainable sealing of bases, garages, garden walls etc.
- not suitable for porous-concrete

Properties:

- can be applied to damp walls without predrying
- high resistance to wear and pressure
- high bonding strength
- high area output due to smooth processability
- suitable for automated processing, can also be slurried and spatulated
- resistant against salt, wastewater and frost
- quick hardening
- highly alkaline
- strongly hydrophobic
- also appropriate in case of salt contamination
- resistant against negative water pressure

Use:

approx. 13 kg/m²
(approx. 25 kg is sufficient for approx. 1,9 m² at 1 cm thickness)

Container:

25 kg bag (Art.-Nr. FS25WPR)
42 bags/pallet

EAN-Nr.:

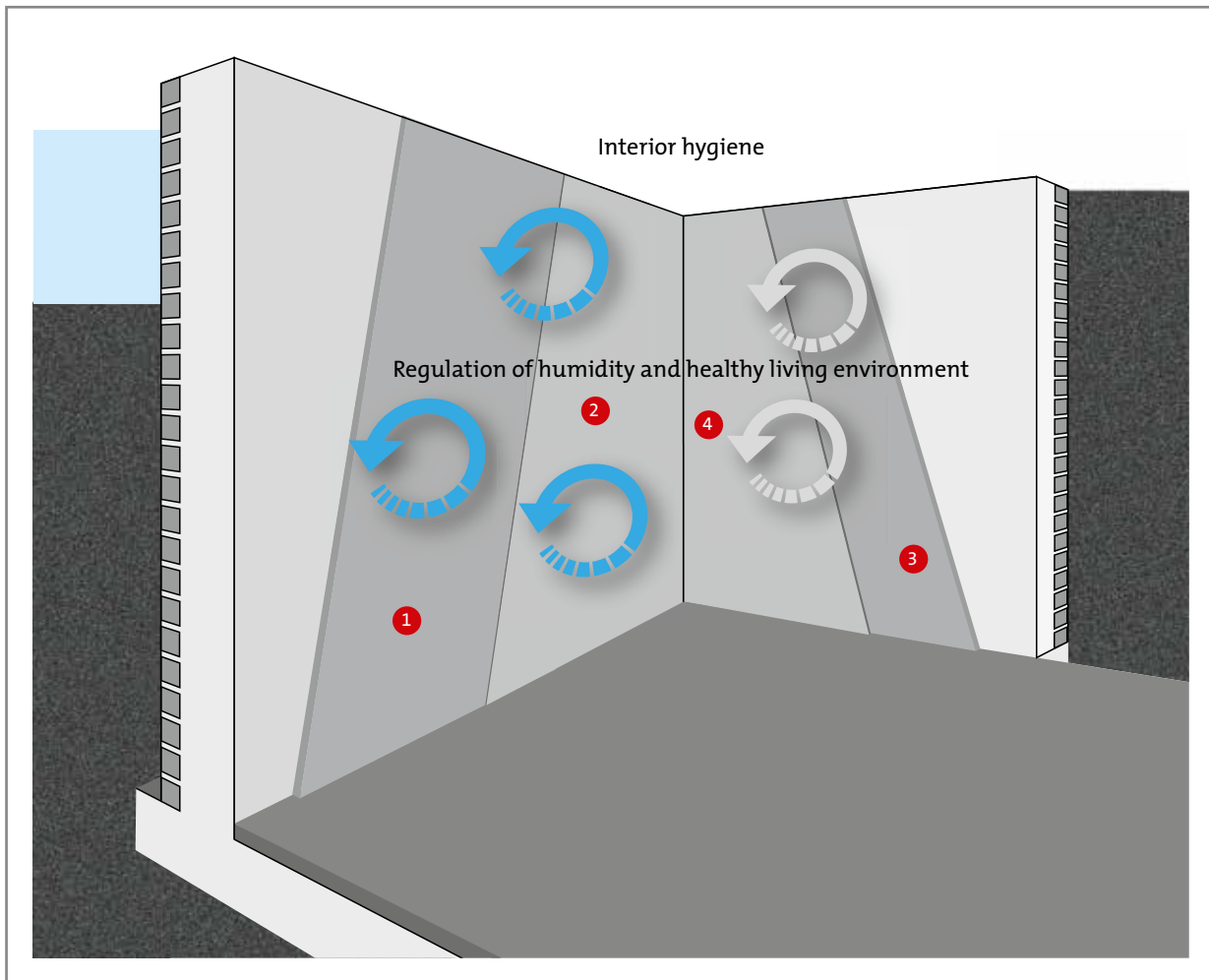
4260122568673



**NATURALLY BEAUTIFUL
WALL COATING SYSTEMS
FOR HEALTHY LIVING**

OVERVIEW

LUNO WALL COATINGS



1 Luno Indoor plaster
Luno Lime interior
plaster / Luno Smooth
finish lime plaster

2 Luno Silicate brush-on
plaster / Luno Lime fine
plaster

3 Luno Clay plaster
(smooth)

4 Luno Clay paint

Luno Lime interior plaster

Lime interior plaster for surface coating of Clima Redboard pro and Clima Redboard basic



Areas of application:

- for surface coating of Clima Redboard pro, Redboard basic, Redboard wedge-shaped and Redboard window soffit boards
- compensation of uneven surfaces such as half-timbered walls
- for interior walls and ceilings
- for breathable coatings
- basis for subsequent mineral paint coatings

Use:

ca. 1,4 kg / m² per mm coating thickness

Container:

30 kg bag (Item No. FB25KIP)
36 bags/pallet

EAN No.:

4260122569335

Properties:

- results in a slightly rough structured surface
- suitable for damp rooms

Luno Lime smooth finish

Breathable smooth finish for the coating of insulation boards



Areas of application:

- for breathable surface coating of interior mineral suboils
- specially suitable for Clima Redboard pro, Clima Redboard basic, Pura Mineral Insulation Board, Termoküp, Secco Universal Renovation Board (USP), other mineral construction materials

Use:

approx. 1,1 kg/m² per mm coating thickness

Container:

15 kg bag (Item No. LK15KG)
48 bags/pallet

EAN No.:

4260122569397

Properties:

- breathable, capillary-active
- highly-alkaline, mold-inhibiting
- smooth and easy processing
- fine surface, can be grinded

Luno Indoor plaster

Breathable, moisture-regulating lime-based interior plaster



Areas of application:

- as a healthy, moisture-regulating PCM plaster in all living, working and recreation rooms
- for rooms with increased levels of air humidity such as kitchens, bathrooms, sauna/wellness areas and other damp rooms
- as PCM plaster and condensation buffer on non-moisture-regulating substrates, such as Secco Barrier plaster

Use:

approx. 15 kg/m² at 1 cm coating thickness

Container:

25 kg bag (Item No. FS25WP)
36 bags/pallet

EAN No.:

4260122569106

Properties:

- ready-mixed factory-made dry-mix mortar
- breathable, moisture regulating
- mould-inhibited as a result of mineral composition and lime content
- can be worked by hand or with a machine
- ideal substrate for breathable paints and wallpapers

Luno Silicate brush-on plaster

High-quality silicate plaster with fine structure and high filling power for the coating of interior wall surfaces



Areas of application:

- as a final coating on Clima Redboard pro, Clima Redboard basic, Secco Universal Renovation Boards (USP) and Pura Mineral Insulation Boards
- on other mineral substrates

Use:

approx. 400–500 g/m²

Container:

25 kg hoboock/bucket
(Item No. AC09gSSP)

EAN No.:

4260122563364

Properties:

- high water vapour permeability
- plasticiser-free
- unsaponifiable
- pre-formed
- has outstanding properties in terms of building physics and building biology
- drying by means of silicification with the mineral substrate

Luno Lime finishing coat

Fine lime top coat for healthy, hygienic interiors and a pleasant living environment



Areas of application:

- disinfectant fine plaster for living spaces, harmless to health
- for high building biology requirements on surfaces (interior)
- suitable for mineral substrates

Properties:

- ready for processing (paste-like), made of natural raw materials
- breathable, moisture regulating
- highly alkaline, prevents mould
- disinfecting, antistatic
- solvent-free
- can be structured
- recommended for ecologically building
- particle size: 0.5 mm

Use:

approx. 1.1 kg/m² per mm coating thickness

Container:

5 kg bucket (Item No. FB05KFP)
20 kg bucket (Item No. FB20KFP)

EAN No.:

5 kg: 4260122569373
20 kg: 4260122569311

Primer

Silicate dispersion primer for absorbing substrates (e.g. Clima Redboard basic, Pura Mineral Insulation Boards)



Areas of application:

- for highly absorbant substrates such as calcium silicat and mineral insulation boards
- for mineral substrates such as masonry, solid plasters, concrete and others

Properties:

- solvent-free
- plasticizer-free
- low-odour
- high penetration depth
- good surface compaction
- highly breathable

Use:

approx. 200-400 ml/m²
determine exact material requirements by doing a trial coat on the object

Container:

1 l bottle (Item No. AC101TG)
5 l canister (Item No. AC100TG)
10 l canister (Item No. AC099TG)

EAN No.:

1 l bottle: 4260122563630
5 l canister: 4260122563265
10 l canister: 4260122563272

Plaster mesh 070

fine glass scrim mesh for reinforcement



Areas of application:

- reinforcement layer on calcium silicate boards, part of the redstone „Living comfort (CLIMA)“ range, used in combination with redstone levelling compound or Luno Lime Smooth Finish

Properties:

- non-slip, dimensional-stable
- alkali-resistant
- rot-resistant
- weight per unit area: approx. 70 ± 7 g/m²

Use:

1.1 m²/m² area

Container:

100 m² rolls
(width: 1 m, length: 100 m)
(Item No. ACC070PG)

EAN No.:

4260122563340



A company of the
Calsitherm® Group

redstone GmbH & Co. KG
Haferwende 1, 28357 Bremen
GERMANY

Tel.: +49 (0) 421 / 22 31 49-0
Fax: +49 (0) 421 / 22 31 49-90
info@redstone.de
www.redstone.de